

# fast lane

... training from the experts



**aruba**

a Hewlett Packard  
Enterprise company

AUTHORIZED  
**TRAINING CENTER**

★ ★ ★ 2016 EMEA EXCELLENCE IN TRAINING ★ ★ ★

FAST LANE > TRAINING FROM THE EXPERTS  
Fast Lane Institute for Knowledge Transfer GmbH  
Modecenterstraße 14/B4 > 1030 Vienna  
Tel +43 | 7079538-0 > Fax +43 | 7079538-20  
Info\_at@flane.com > [www.flane.com](http://www.flane.com)

Errors as well as literal and phrase mistakes excepted. All prices are exclusive of value added tax. Gender neutral wording – The content of this brochure is addressed to males and females equally.

# 2016

## ARUBA LEARNING PATHS

Mobility / Mobility Track				
	Course ID	Course Name	Delivery Method	Additional Information
		Wired Fundamentals - Prerequisites	Self Paced	Online Training: <a href="http://www.flane.at/course_offerings/aruba.html">http://www.flane.at/course_offerings/aruba.html</a>
		Wireless Fundamentals - Prerequisites	Self Paced	
ACMA	IAW	Introduction to Aruba WLANs	Instructor Led	Only offered in combination with SWDI as <b>Mobility Bootcamp (MBC)</b>
ACMP	IAP	Instant Access Points	Self Paced	Online Training: <a href="http://cloud.arubanetworks.com/getting-started">http://cloud.arubanetworks.com/getting-started</a>
	SWDI	Scalable WLAN Design and Implementation	Instructor Led	Only offered in combination with IAW as <b>Mobility Bootcamp (MBC)</b>
	MBC	Mobility Boot Camp	Instructor Led	Combines IAW & SWDI -> Bootcamp Authorized European Training Center
ACMX	ATS	Advanced Troubleshooting	Instructor Led	Authorized European Training Center

Clearpass / Access Management Track				
	Course ID	Course Name	Delivery Method	Additional Information
ACCP	CPE	ClearPass Essentials	Instructor Led	Combines ClearPass Policy Manager & ClearPass Guest

AirWave / Network Management Track				
	Course ID	Course Name	Delivery Method	Additional Information
ACDX	AICU	Airwave Installation, Configuration and Use	Instructor Led	Authorized European Training Center
Meridian / Beacon / Location Tracking				
	Course ID	Course Name	Delivery Method	Additional Information
ACEAP	EAE	Aruba Engagement & Analytics Essentials	Trainingsinstitut	Authorized European Training Center

Certification exams are validated by field personnel and are updated regularly to reflect current features and best practices. Recertification is required every three years.

**PEARSON**

VUE - Authorised  
Test Centre

Fast Lane as a certified PearsonVue Testcenter, is glad to support you with the planning and realization of your certification.

Founded in 2002, Aruba Networks is the leading provider of next-generation access management, network infrastructure and mobility application solutions for mobile enterprise networks.

The company's **Mobile Virtual Enterprise (MOVE)** architecture unifies these three core areas into one cohesive and manageable system that strengthens security and dramatically simplifies bring-your-own-device implementations.

**MOVE is software-defined so it easily adapts to the dynamics of mobility. This enables IT to manage traffic flows on any wired, wireless and remote network and control how devices and work applications are used – without upgrading or reconfiguring existing networks.**

Whether away or at work, MOVE gives users consistent, secure access to the appropriate corporate resources based on who they are, where they are and what device they're using.

The result is a rightsized network infrastructure that saves IT time, reduces capital and operating expenses, speeds-up service delivery, and provides every user with the highest-quality mobility experience.



## Aruba Certification

The multi-tier technical certification programs offered by Aruba distinguish individuals with engineering excellence in indoor and outdoor wireless LANs (WLANs), remote networking, mobility and network management.

Aruba certified engineers gain extensive engineering knowledge about solving real-world wireless deployment challenges and many quickly become the distinguished go-to resource for enterprise mobility projects. Rigorous associate-, professional-, and expert-level certification curriculum and exams ensure that network engineers gain the essential, comprehensive knowledge to accelerate their professional development.

- **Aruba Certified Mobility Professional (ACMP)** covers WLAN design, device provisioning, application management, and network security. Certification covers device onboarding and deploying voice and video over wireless. ACSP is open to all engineers, not just Aruba users.
- **Aruba Certified Solutions Professional (ACSP)** substantiates your comprehension of WLANs with more complex network settings in environments with multiple Mobility Controllers.
- **Aruba Certified ClearPass Professional (ACCP)** certification verifies your knowledge and ability to administer and maintain the ClearPass Policy Manager and ClearPass Guest system.
- **Aruba Wireless Mesh Professional (AWMP)** certification validates your ability to design and deploy outdoor wireless mesh networks that provide Wi-Fi and backhaul capabilities.
- **Aruba Certified Design Expert (ACDX)** validates your technical ability to architect large, extended campus and remote WLANs. ACMP is a prerequisite for this certification.
- **Aruba Certified Mobility Expert (ACMX)** tests your technical expertise in implementing and troubleshooting large-scale WLANs. ACMP is a prerequisite for this certification.

## **AR-MBC**

Aruba Mobility Boot Camp

Duration: 5 Days

### **Who should attend:**

Network engineers with more than a single controller in the network

### **Prerequisites**

Students are expected to come to the class with knowledge of Aruba's products. A conceptual knowledge of VLANs and network data flow & control helps frame the specifics of Aruba's network architecture. Students taking this class must complete the following self-paced online courses available to view at no charge on the Aruba Web Site.

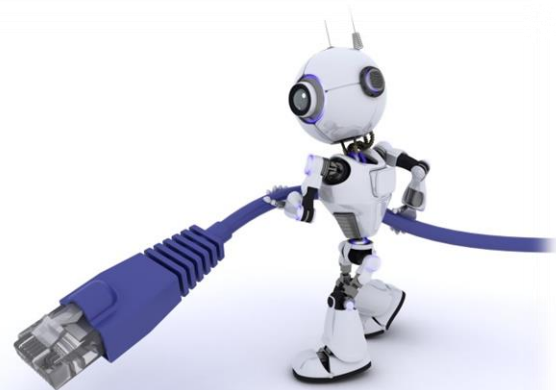
- Networking Fundamentals (Required for non CCNA capable students)
- Introduction to Aruba Technology (Required)

### **Course Content**

This class combines the IAW and SWDI classes into a single 5-day class. A prerequisite understanding of wireless fundamentals is mandatory, as well as VLAN fundamentals, data flow and control in a network, and basic routing principles. Successful conclusion of the course and in-class exam earns the participant the Aruba Certified Mobility Professional status.

### **Course Outline**

- Aruba Architecture and Features
- Mobility Controller initial setup and licensing using ArubaOS wizards
- RFProtect
- Rogue classification and containment
- Implementing Roles and Firewall Policies
- Advanced Firewall Functions
- Using WLAN policies to create a Secure Employee WLAN with 802.1X
- Using WLAN policies to create a Secure Guest WLAN with Captive Portal authentication
- Aruba WLAN Configuration
- Create 'VisualRF' plans to place access points and air monitors
- Use Visual RF Plan to determine your pre-deployment placement of Aps
- Import Visual RF Plan to AirWave
- Using ArubaOS RF Plan to monitor access points and air monitors
- Adaptive Radio Management (ARM)
- Using the integrated Spectrum Analyzer to monitor RF environment
- Provisioning Aruba thin APs using wizards and the GUI
- Remote Access Point (RAP) using API25 and RAP2's zero touch
- RAP Uplink Bandwidth Reservation
- Virtual Internet Access (VIA)
- Content Security Service (CSS)
- Secured Wired Access
- Master/local benefits
- Mobility / Roaming
- Site to site VPN
- Master redundancy
- Local redundancy
- AP redundancy
- Mesh solutions



## FAST LANE AUSTRIA ARUBA SCHEDULE

### ARUBA Mobility Boot Camp - AR MBC

Coursedate	Days	Price in EUR	Language	Country	Location
11.01. - 15.01.2015	5 Days	2.900,-	German	Germany	Munich
25.01. - 29.01.2016	5 Days	2.900,-	Italian	Italy	Milano
25.01. - 29.01.2016	5 Days	2.900,-	English	Belgium	Brussels
01.02. - 05.02.2016	5 Days	2.900,-	English	Switzerland	Zurich
15.02. - 19.02.2016	5 Days	2.900,-	Spanish	Spain	Madrid
29.02. - 04.03.2016	5 Days	2.900,-	English	Czech Republic	Prague
14.03. - 18.03.2016	5 Days	2.900,-	Italian	Italy	Milano
14.03. - 18.03.2016	5 Days	2.900,-	English	Netherlands	Amsterdam
11.04. - 15.04.2016	5 Days	2.900,-	German	Germany	Munich
11.04. - 15.04.2016	5 Days	2.900,-	English	Austria	Vienna
18.04. - 22.04.2016	5 Days	2.900,-	English	Czech Republic	Prague
09.05. - 13.05.2016	5 Days	2.900,-	Spanish	Spain	Madrid
23.05. - 27.05.2016	5 Days	2.900,-	English	Sweden	Stockholm
23.05. - 27.05.2016	5 Days	2.900,-	Italian	Italy	Milano
20.06. - 24.06.2016	5 Days	2.900,-	German	Germany	Munich
04.07. - 08.07.2016	5 Days	2.900,-	Spanish	Spain	Barcelona
11.07. - 15.07.2016	5 Days	2.900,-	English	Sweden	Stockholm
11.07. - 15.07.2016	5 Days	2.900,-	English	Austria	Vienna
25.07. - 29.07.2016	5 Days	2.900,-	English	Switzerland	Zurich
15.08. - 19.08.2016	5 Days	2.900,-	English	Netherlands	Amsterdam
22.08. - 26.08.2016	5 Days	2.900,-	English	Belgium	Brussels
29.08. - 02.09.2016	5 Days	2.900,-	English	Austria	Vienna
05.09. - 09.09.2016	5 Days	2.900,-	English	Norway	Oslo
12.09. - 16.09.2016	5 Days	2.900,-	English	Belgium	Brussels
19.09. - 23.09.2016	5 Days	2.900,-	English	Denmark	Copenhagen
19.09. - 23.09.2016	5 Days	2.900,-	English	Switzerland	Zurich
26.09. - 30.09.2016	5 Days	2.900,-	Spanish	Spain	Madrid
10.10. - 14.10.2016	5 Days	2.900,-	English	Finland	Helsinki
24.10. - 28.10.2016	5 Days	2.900,-	Italian	Italy	Milano
24.10. - 28.10.2016	5 Days	2.900,-	German	Germany	Munich
21.11. - 25.11.2016	5 Days	2.900,-	English	Belgium	Brussels

Subject to modifications  
All prices are exclusive of value added tax

### Special requests

For any on-site training or special requests please don't hesitate to contact our dedicated account manager Johann Strobl via [jstrobl@flane.com](mailto:jstrobl@flane.com) or call direct +43 1 707 95 38 - 44

## AR-CPE

Aruba Clear Pass Essentials

Duration: 5 Days

**Who should attend:** Network Administrators and IT Staff:

- who's network must support "Bring Your Own Device" (BYOD) provisioning and onboarding.
- who configure and manage guest and visitor WLAN access.
- responsible for reporting and compliance of WLANs

## Prerequisites

- Familiarity with network standard and terminology, VLANs and IP protocols including routing and switching.
- Basic WLAN terminology and concepts
- Knowledge of wired and wireless networking design and operations
- Knowledge of Radius server configuration, 802.1X authentication, AAA, LDAP and active Directory experience.

## Course Content

The "ClearPass Essentials (CPE)" training course provides you with a foundation in Network Access Control using ClearPass system. This course covers in depth configuration of ClearPass policy manager with a focus on Enforcement and Device Profiling. The course also includes setup and configuration details of primary application of ClearPass Guest like guest web login pages, guest self-registration, device provisioning using OnBoard and client posture analysis using OnGuard.

## Course Outline

- Introduction to ClearPass, ClearPass Licensing
- Introduction to Security - An Overview of RADIUS TACACS
- Introduction to Network Access Devices (NAD) - Configuration of Aruba Devices
- ClearPass Policy Manager Roles, Role Assignments
- Integration with Active Directory (AD)
- Overview of Policy Model, Configuration of a Policy Service, building a Policy Service
- Need for Enforcement Policies - Enforcement Profiles
- Need for Posture Checks - Posture Configurations • OnGuard •
- EndPoint Profiler - Profile Configuration
- Advanced Enforcement
- Monitoring
- Troubleshooting
- Introduction to ClearPass Guest Application
- ClearPass Guest Manager
- Need for Weblogin Pages - Customising the Weblogin Page • Network Configuration
- Introduction to Self-Registration - Configuration of Self-Registration, Backend Processing
- ClearPass Operations
- Admin Users
- Introduction to Onboard Application
- Onboard as Root Certificate Authority (CA) vs Intermediate CA
- ClearPass Guest Configuration for Onboarding –
- Network Configuration for Onboarding, Onboard Client Experience
- HotSpot
- ClearPass Insight
- ClearPass Clustering
- QuickConnect Application
- Integration of non-Aruba Devices with ClearPass
- Introduction to AirGroup

## FAST LANE AUSTRIA ARUBA SCHEDULE

### ARUBA ClearPass Essentials - AR CPE

Course date	Days	Price in EUR	Language	Country	Location
18.01. - 22.01.2016	5 Days	2.900,-	English	Czech Republic	Prague
15.02. - 19.02.2016	5 Days	2.900,-	English	Austria	Vienna
15.02. - 19.02.2016	5 Days	2.900,-	English	Sweden	Stockholm
22.02. - 26.02.2016	5 Days	2.900,-	German	Germany	Munich
29.02. - 04.03.2016	5 Days	2.900,-	English	Switzerland	Zurich
07.03. - 11.03.2016	5 Days	2.900,-	English	Netherlands	Amsterdam
07.03. - 11.03.2016	5 Days	2.900,-	Italian	Italy	Milano
14.03. - 18.03.2016	5 Days	2.900,-	Spanish	Spain	Madrid
21.03. - 25.03.2016	5 Days	2.900,-	English	Belgium	Brussels
11.04. - 15.04.2016	5 Days	2.900,-	English	Norway	Oslo
25.04. - 29.04.2016	5 Days	2.900,-	English	Denmark	Copenhagen
09.05. - 13.05.2016	5 Days	2.900,-	German	Germany	Munich
06.06. - 10.06.2016	5 Days	2.900,-	English	Czech Republic	Prague
06.06. - 10.06.2016	5 Days	2.900,-	Spanish	Spain	Madrid
18.07. - 22.07.2016	5 Days	2.900,-	English	Austria	Vienna
29.08. - 02.09.2016	5 Days	2.900,-	English	Netherlands	Amsterdam
19.09. - 22.09.2016	5 Days	2.900,-	English	Finland	Helsinki
17.10. - 21.10.2016	5 Days	2.900,-	English	Belgium	Brussels
17.10. - 21.10.2016	5 Days	2.900,-	Spanish	Spain	Madrid
07.11. - 11.11.2016	5 Days	2.900,-	English	Austria	Vienna
07.11. - 11.11.2016	5 Days	2.900,-	Spanish	Spain	Barcelona
14.11. - 18.11.2016	5 Days	2.900,-	English	Switzerland	Zurich
28.11. - 02.12.2016	5 Days	2.900,-	German	Germany	Munich

Subject to modifications  
All prices are exclusive of value added tax

### Special requests

For any on-site training or special requests please don't hesitate to contact our dedicated account manager Johann Strobl via [jstrobl@flane.com](mailto:jstrobl@flane.com) or call direct +43 1 707 95 38 - 44

## **AR-ATS**

Aruba Advanced Troubleshoot

Duration: 4 Days

### **Who should attend:**

This course is designed for individuals responsible for the provisioning and configuration maintenance of an Aruba based network. This course is not a hardware troubleshooting oriented class. Rather it focuses on the commands and screens necessary to diagnose network and wireless related issues.

### **Prerequisites**

Knowledge level at the ACMP level.

Students must be comfortable with provisioning profiles for various aspects of the Aruba Controller. The labs are written as objectives and are not documented in a step by step manner. Therefore, the student must know how to provision a controller without reliance upon detailed lab instructions.

### **Course content**

The “Advanced Troubleshooting (ATS)” course is a instructor-led course provides an overview of methodologies and tools for troubleshooting Aruba based networks. Labs are designed to inject problems into the student networks in a controlled fashion to demonstrate how various symptoms appear. Therefore, when problems are seen in a production environment, they will be more quickly identified and remedied.

### **Course Outline**

- Troubleshooting Philosophies
- Overview of Troubleshooting tools
  - Debug
  - Logs
- AP Boot Issues
- RF Issues
  - Spectrum Analysis
- IPSec
- Remote AP
- Client Issues; Connectivity & authentication
- Captive Portal
- Role Derivation
- Infrastructure Issues
- Master-Local Communications
- VRRP
- Radius & DHCP



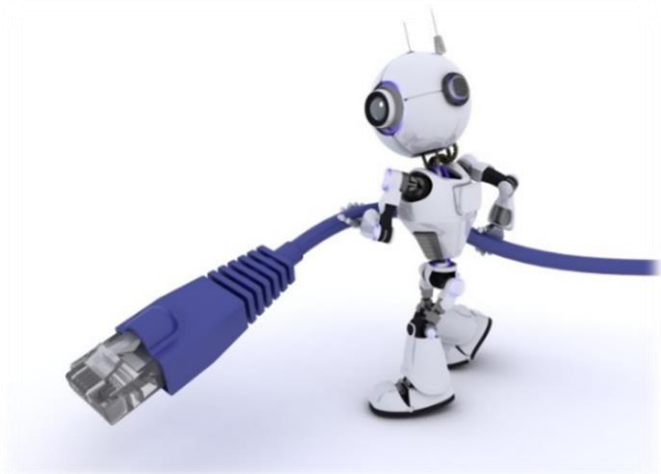


## FAST LANE AUSTRIA ARUBA SCHEDULE

### ARUBA Advanced Troubleshooting - AR ATS

<b>Coursedate</b>	<b>Days</b>	<b>Price in EUR</b>	<b>Language</b>	<b>Country</b>	<b>Location</b>
11.01. - 14.01.2016	4 Days	2.500,-	English	Netherlands	Amsterdam
25.01. - 28.01.2016	4 Days	2.500,-	English	Denmark	Copenhagen
22.02. - 25.02.2016	4 Days	2.500,-	English	Belgium	Brussels
23.05. - 26.05.2016	4 Days	2.500,-	Spanish	Spain	Madrid
30.05. - 02.06.2016	4 Days	2.500,-	English	Norway	Oslo
13.06. - 16.06.2016	4 Days	2.500,-	English	Switzerland	Zurich
18.07. - 21.07.2016	4 Days	2.500,-	English	Netherlands	Amsterdam
08.08. - 11.08.2016	4 Days	2.500,-	English	Czech Republic	Prague
04.10. - 07.10.2016	4 Days	2.500,-	German	Germany	Munich
17.10. - 20.10.2016	4 Days	2.500,-	English	Austria	Vienna
07.11. - 10.11.2016	4 Days	2.500,-	Italian	Italy	Milano
12.12. - 15.12.2016	4 Days	2.500,-	English	Switzerland	Zurich
12.12. - 15.12.2016	4 Days	2.500,-	Spanish	Spain	Madrid
12.12. - 15.12.2016	4 Days	2.500,-	English	Finland	Helsinki

Subject to modifications  
All prices are exclusive of value added tax



### Special requests

For any on-site training or special requests please don't hesitate to contact our dedicated account manager Johann Strobl via [jstrobl@flane.com](mailto:jstrobl@flane.com) or call direct +43 1 707 95 38 - 44

### **AR-EAE**

Aruba Engagement & Analytics  
Essentials  
Duration: 3 Days

### **Certification:**

- Upon completion of the course, participants are eligible to take the Aruba Certified Engagement & Analytics Professional certification (ACEAP) exam at Pearson VUE.

### **Equipment requirements**

Participants are required to bring a laptop with a Wi-Fi interface and administrative privileges to class. All other equipment will be provided.

### **Course content**

The Analytics and Mobile Engagement (AME) essentials training is a 3-day instructor-led classroom technical training course. This course covers the Meridian, Bluetooth beacons as well as the Analytics and Location Engine (ALE) platform. Participants will be provided with an in-depth technical overview of the features and will have an opportunity to tackle hands-on labs as well. Topics such as Meridian Appmaker and SDK, maps and app content creation will be covered. Students will be provided with a technical overview of beacon deployment and troubleshooting, with hands-on labs. In addition, the ALE platform will be covered and students will get an overview of how to deploy and troubleshoot the platform. Please refer to the full description for a full listing of modules.

### **Course Outline**

The following modules will be covered in class by the instructor, with accompanying hands-on labs. This module layout is subject to changes:

- Mod 1 – Meridian, BLE & ALE Intro
- Mod 2 – Maps and Placemarks
- Mod 3 – Pages and Events
- Mod 4 – Beacon positioning
- Mod 5 – Campaigns and notifications
- Mod 6 – Beacon Deployment and Installation
- Mod 7 – Beacon management
- Mod 8 – Beacon Operations and Maintenance
- Mod 9 – Troubleshooting
- Mod 10 – ALE and Analytics
- Mod 11 – Integration with ClearPass



## FAST LANE AUSTRIA ARUBA SCHEDULE

### ARUBA Engagement & Analytics Essentials - AR EAE

Course date	Days	Price in EUR	Language	Country	Location
11.01. - 13.01.2016	3 Tage	2.650,-	English	Finland	Helsinki
11.01. - 13.01.2016	3 Tage	2.650,-	English	Belgium	Brussels
25.01. - 27.01.2016	3 Tage	2.650,-	English	Netherlands	Amsterdam
01.02. - 03.02.2016	3 Tage	2.650,-	English	Norway	Oslo
22.02. - 24.02.2016	3 Tage	2.650,-	Italian	Italy	Milano
22.02. - 24.02.2016	3 Tage	2.650,-	English	Switzerland	Zurich
22.02. - 24.02.2016	3 Tage	2.650,-	Spanish	Spain	Madrid
29.02. - 02.03.2016	3 Tage	2.650,-	English	Austria	Vienna
14.03. - 16.03.2016	3 Tage	2.650,-	German	Germany	Munich
04.04. - 06.04.2016	3 Tage	2.650,-	English	Sweden	Stockholm
18.04. - 20.04.2016	3 Tage	2.650,-	English	Netherlands	Amsterdam
18.04. - 20.04.2016	3 Tage	2.650,-	Spanish	Spain	Madrid
25.04. - 27.04.2016	3 Tage	2.650,-	English	Belgium	Brussels
09.05. - 11.05.2016	3 Tage	2.650,-	English	Austria	Vienna
16.05. - 18.05.2016	3 Tage	2.650,-	English	Czech Republic	Prague
16.05. - 18.05.2016	3 Tage	2.650,-	English	Finland	Helsinki
23.05. - 25.05.2016	3 Tage	2.650,-	English	Switzerland	Zurich
06.06. - 08.06.2016	3 Tage	2.650,-	English	Netherlands	Amsterdam
13.06. - 15.06.2016	3 Tage	2.650,-	Italian	Italy	Milano
11.07. - 13.07.2016	3 Tage	2.650,-	German	Germany	Munich
11.07. - 13.07.2016	3 Tage	2.650,-	Spanish	Spain	Madrid
25.07. - 27.07.2016	3 Tage	2.650,-	English	Belgium	Brussels
25.07. - 27.07.2016	3 Tage	2.650,-	Spanish	Spain	Madrid
08.08. - 11.08.2016	3 Tage	2.650,-	English	Norway	Oslo
15.08. - 17.08.2016	3 Tage	2.650,-	English	Switzerland	Zurich
22.08. - 24.08.2016	3 Tage	2.650,-	Italian	Italy	Milano
05.09. - 07.09.2016	3 Tage	2.650,-	German	Germany	Munich
12.09. - 15.09.2016	3 Tage	2.650,-	English	Sweden	Stockholm
12.09. - 15.09.2016	3 Tage	2.650,-	English	Austria	Vienna
10.10. - 12.10.2016	3 Tage	2.650,-	Italian	Italy	Milano
10.10. - 12.10.2016	3 Tage	2.650,-	English	Netherlands	Amsterdam
24.10. - 26.10.2016	3 Tage	2.650,-	Spanish	Spain	Madrid
07.11. - 09.11.2016	3 Tage	2.650,-	English	Finland	Helsinki
21.11. - 23.11.2016	3 Tage	2.650,-	English	Norway	Oslo
28.11. - 30.11.2016	3 Tage	2.650,-	English	Belgium	Brussels
05.12. - 07.12.2016	3 Tage	2.650,-	English	Czech Republic	Prague
12.12. - 14.12.2016	3 Tage	2.650,-	Italian	Italy	Milano
12.12. - 14.12.2016	3 Tage	2.650,-	English	Austria	Vienna
12.12. - 14.12.2016	3 Tage	2.650,-	German	Germany	Munich
19.12. - 21.12.2016	3 Tage	2.650,-	English	Switzerland	Zurich

Subject to modifications  
All prices are exclusive of value added tax

### Special requests

For any on-site training or special requests please don't hesitate to contact our dedicated account manager Johann Strobl via [jstrobl@flane.com](mailto:jstrobl@flane.com) or call direct +43 1 707 95 38 - 44

## AR-AICU

Airwave Installation,  
Configuration & Use  
Duration: 4 Days

### Who should attend:

- Network Administrators who monitor and troubleshoot wireless networks
- Network and System Administrators responsible for installing and configuring network monitoring systems

### Prerequisites

- Basic WLAN terminology and concepts
- Knowledge of wired and wireless networking design and operations
- Experience installing network monitoring software

### Course content

This hands-on course provides the knowledge and experience required to install and use the AirWave Wireless Management Suite: AirWave Management Platform (AMP), RAPIDS, and Visual RF. Structured labs provide students individual time with the AMP server and a series of exercises that progress from monitoring single-vendor networks to the configuration and reporting of complex, multi-vendor networks. Students also learn how to integrate AirWave products into an existing network. The course is WLAN vendor neutral and assumes a heterogeneous network.

AICU Installation, Configuration and Use is appropriate for those new to the AirWave platform and provides an opportunity for the student to become familiar with the functions and capability of the product in a controlled lab environment.

### Course Outline

- Introduction to AICU
- Installing AICU
- Adding Device to AICU
- Using Visual RF and Visual RF Plan
- Troubleshooting Clients and Wireless Networks
- Rogue Detection and Using RAPIDS
- Managing Administrative Access, Alerts, Triggers and Reporting
- Scalability and Redundancy
- AICU System Administration
- Wired Device Management
- Aruba Configuration Methodologies
- Configuring Aruba Devices with AICU
- Aruba IAP Management
- Cisco Configuration Methodologies
- Configuring Cisco Devices with IOS Templates
- Cisco WLC Configuration

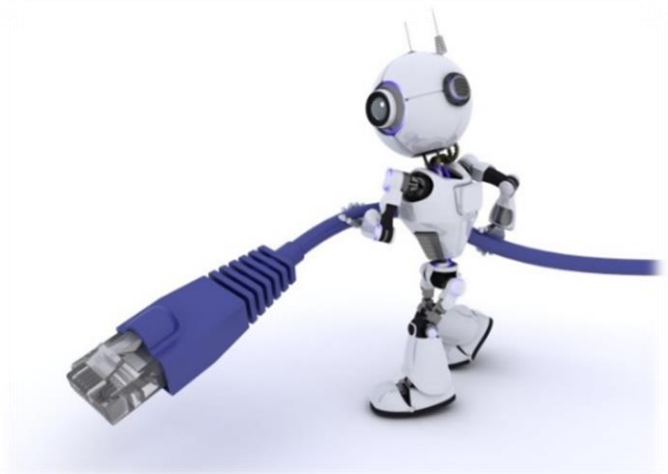


## FAST LANE AUSTRIA ARUBA SCHEDULE

### ARUBA Airwave Installation, Configuration Use - AR AICU

Course date	Days	Price in EUR	Language	Country	Location
29.02. - 03.03.2016	4 Days	2.500,-	German	Germany	Munich
11.04. - 14.04.2016	4 Days	2.500,-	Spanish	Spain	Madrid
25.04. - 28.04.2016	4 Days	2.500,-	English	Norway	Oslo
17.05. - 20.05.2016	4 Days	2.500,-	English	Belgium	Brussels
13.06. - 16.06.2016	4 Days	2.500,-	English	Austria	Vienna
20.06. -23.06.2016	4 Days	2.500,-	English	Norway	Oslo
20.06. -23.06.2016	4 Days	2.500,-	English	Netherlands	Amsterdam
04.07. - 07.07.2016	4 Days	2.500,-	Italian	Italy	Milano
01.08. - 04.08.2016	4 Days	2.500,-	German	Germany	Munich
22.08. - 25.08.2016	4 Days	2.500,-	English	Denmark	Copenhagen
26.09. - 29.09.2016	4 Days	2.500,-	English	Netherlands	Amsterdam
10.10. - 13.10.2016	4 Days	2.500,-	English	Switzerland	Zurich
21.11. - 24.11.2016	4 Days	2.500,-	Spanish	Spain	Madrid
28.11. - 01.12.2016	4 Days	2.500,-	English	Netherlands	Amsterdam
12.12. - 15.12.2016	4 Days	2.500,-	English	Belgium	Brussels

Subject to modifications  
All prices are exclusive of value added tax



### Special requests

For any on-site training or special requests please don't hesitate to contact our dedicated account manager Johann Strobl via [jstrobl@flane.com](mailto:jstrobl@flane.com) or call direct +43 1 707 95 38 - 44



# CALENDAR 2016

	January	February	March	April	May	June	July	August	September	October	November	December	
1	Fri New Years Day	Mon	Tue	Fri	Sun State Holiday Austria	Wed	Fri	Mon	Thu	Sat	Tue All Saint's Day	Thu	1
2	Sat	Tue	Wed	Sat	Mon	Thu	Sat	Tue	Fri	Sun	Wed All Soul's Day	Fri	2
3	Sun	Wed	Thu	Sun	Tue	Fri	Sun	Wed	Sat	Mon	Thu	Sat	3
4	Mon	Thu	Fri	Mon	Wed	Sat	Mon	Thu	Sun	Tue	Fri	Sun Second Advent	4
5	Tue	Fri	Sat	Tue	Thu Ascension Day	Sun	Tue	Fri	Mon	Wed	Sat	Mon	5
6	Wed Epiphany	Sat	Sun	Wed	Fri	Mon	Wed	Sat	Tue	Thu	Sun	Tue	6
7	Thu	Sun	Mon	Thu	Sat	Tue	Thu	Sun	Wed	Fri	Mon	Wed	7
8	Fri	Mon	Tue	Fri	Sun Mother's Day	Wed	Fri	Mon	Thu	Sat	Tue	Thu The Immaculate Conception	8
9	Sat	Tue Carnival Tuesday	Wed	Sat	Mon	Thu	Sat	Tue	Fri	Sun	Wed	Fri	9
10	Sun	Wed Ash Wed.	Thu	Sun	Tue	Fri	Sun	Wed	Sat	Mon	Thu	Sat	10
11	Mon	Thu	Fri	Mon	Wed	Sat	Mon	Thu	Sun	Tue	Fri	Sun Third Advent	11
12	Tue	Fri	Sat	Tue	Thu	Sun	Tue	Fri	Mon	Wed	Sat	Mon	12
13	Wed	Sat	Sun	Wed	Fri	Mon	Wed	Sat	Tue	Thu	Sun	Tue	13
14	Thu	Sun Valentine's Day	Mon	Thu	Sat Father's Day	Tue	Thu	Sun	Wed	Fri	Mon	Wed	14
15	Fri	Mon	Tue	Fri	Sun Whit Sunday	Wed	Fri	Mon Assumption	Thu	Sat	Tue St. Leopold's Day	Thu	15
16	Sat	Tue	Wed	Sat	Mon Whit Monday	Thu	Sat	Tue	Fri	Sun	Wed	Fri	16
17	Sun	Wed	Thu	Sun	Tue	Fri	Sun	Wed	Sat	Mon	Thu	Sat	17
18	Mon	Thu	Fri	Mon	Wed	Sat	Mon	Thu	Sun	Tue	Fri	Sun Fourth Advent	18
19	Tue	Fri	Sat	Tue	Thu	Sun	Tue	Fri	Mon	Wed	Sat	Mon	19
20	Wed	Sat	Sun Palm Sunday	Wed	Fri	Mon	Wed	Sat	Tue	Thu	Sun	Tue	20
21	Thu	Sun	Mon	Thu	Sat	Tue	Thu	Sun	Wed	Fri	Mon	Wed	21
22	Fri	Mon	Tue	Fri	Sun	Wed	Fri	Mon	Thu	Sat	Tue	Thu	22
23	Sat	Tue	Wed	Sat	Mon	Thu	Sat	Tue	Fri	Sun	Wed	Fri	23
24	Sun	Wed	Thu Maundy Thursday	Sun	Tue	Fri	Sun	Wed	Sat	Mon	Thu	Sat Christmas Eve	24
25	Mon	Thu	Fri Good Friday	Mon	Wed	Sat	Mon	Thu	Sun	Tue	Fri	Sun Christmas Day	25
26	Tue	Fri	Sat	Tue	Thu Corpus Christi	Sun	Tue	Fri	Mon	Wed Austrian National Day	Sat	Mon St. Stephen's Day	26
27	Wed	Sat	Sun	Wed	Fri	Mon	Wed	Sat	Tue	Thu	Sun First Advent	Tue	27
28	Thu	Sun	Mon Easter Monday	Thu	Sat	Tue	Thu	Sun	Wed	Fri	Mon	Wed	28
29	Fri	Mon	Tue	Fri	Sun	Wed	Fri	Mon	Thu	Sat	Tue	Thu	29
30	Sat		Wed	Sat	Mon	Thu	Sat	Tue	Fri	Sun	Wed	Fri	30
31	Sun		Thu		Tue		Sun	Wed		Mon		Sat New Year's Eve	31